

*We All Wish
for the Same
Things...*



UCP Heartland 2018 Annual Report



Program Fun



Violet being adorable



Heather tries a new look



Doug, all set for 2019

GROWING Exciting New Programs

We all have the same dreams...home, family, friends, a meaningful job and companions. We made exciting progress in exceeding these dreams in 2018 by opening the new Gibbs Center, a spectacular, regional program center in Jefferson City, Missouri.



Brenda Wrench, CEO

The agency also proudly invested in the latest adaptive technology in each of our programs to assist our clients with their individual mobility and therapy needs.

Also making an enormous impact on the lives of our participants are Direct Service Professionals. While adaptive equipment helps a specific need, our caring staff works hand-in-hand with program participants to improve overall skill sets and meet or exceed individualized goals. Our DSPs bring their heart to work each day, and through their dedication, program participants gain improvement in their socialization skills, overall functioning and forge tight bonds.



WWT volunteers landscaping our new respite home

We welcomed another new addition to our programs: a family home we purchased in Webster Groves to use as a new respite program. While we complete this renovation, stay in touch with us on social media about our grand opening plans. You are all invited!

Your support has made 2018 a banner year for UCP Heartland. We look forward to working together with you on even more new possibilities for our program participants and their families in the upcoming year. Thank you for sharing your blessings with us.

System Navigator Program

Receiving a disability diagnosis or navigating any transition can be overwhelming to families living with disabilities. UCP Heartland is now offering a very personal, one-on-one service through our "System Navigator" program.

Designed to help families connect to program referrals, medical specialists, transportation and to assist with Medicaid and Social Security applications, our Navigator helps families feel empowered as they are presented with new resources.

Senior Vice President Shari Clay, a 25+ year veteran of disability care, is heading up the Navigator services and assisted 33 families in the first 3 months of the program.



Shari Clay, Senior V.P.

Certified Support Dogs We LOVE

2018 was a year of change. We welcomed our new friend Noah to weekly program visits at Canterbury Center and our Manchester Day program. Noah loves to play ball and the rowdier, the better. Support dogs make a distinctive difference in our programs by energizing the environment and bringing comfort to everyone they meet.

It's also a year that we said good-bye to our beloved dog Max who lovingly served Gibbs Center each day.

Max went out in style this year, winning the title of *second* most handsome dog at the County Fair. He might have come in second, but he will always be number one in so many people's hearts.



Max

EXPANDING Existing Programs



Jeff Rayfield, Board Chair

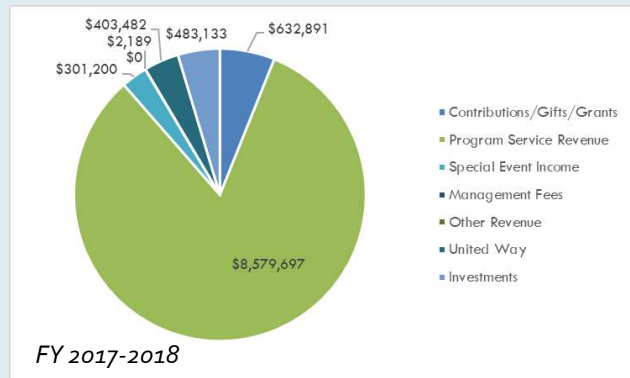
As Chairman of UCP Heartland's board, one of my key roles is guiding our strategic plans for the agency. To keep the mission relevant, we consider potential growth opportunities.

Through our gracious partnerships and donors this past year, UCP Heartland developed an all-new regional Gibbs Center in Jefferson City. This program is a beautiful blend of the very best in interior design and adaptive technology combined with a highly trained staff delivering expert care. We have three training kitchens to help improve program participants' skill sets and job readiness.

The Gibbs Center program now offers Employment Services and is rolling out Residential Services in addition to its ever-expanding Adult Day habilitation programs.

This past year, UCP Heartland also toured facilities to expand its St. Louis day programs and explored the possibility of program expansion in underserved areas. In 2018, the agency met with partners and agencies for potential new program development in South Central Missouri, promising some exciting growth for the agency in the upcoming new year.

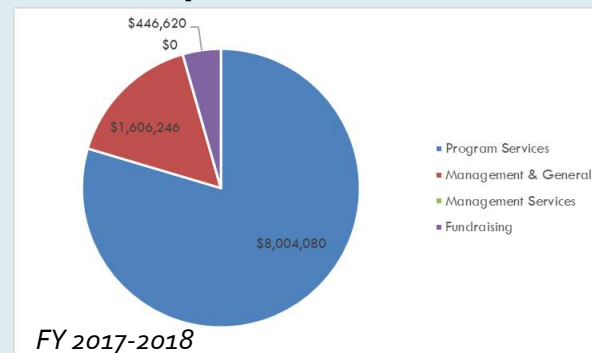
Total Revenue: \$10,402,592



Revenue

Contributions/Gifts/Grants	\$632,891
Program Service Revenue	\$8,579,697
Special Event Income	\$301,200
Management Fees	\$0
Other Revenue	\$2,189
United Way	\$403,482
Investments	\$483,133
Total Revenues	\$10,402,592

Total Expenses: \$10,056,946



Expenses

Program Services	\$8,004,080
Management & General	\$1,606,246
Fundraising	\$446,620
Total Expenses	\$10,056,946
Change in Net Assets	\$345,646
<i>Undesignated</i>	
Net Assets - Beginning of Year	\$11,974,698
Net Assets - End of Year	\$12,320,345
Total Capital Investments	\$856,665

2018 Strategic Program Investments

New Gibbs Center: \$1.1 Million



New Oak Tree Respite \$856,665*



New Technology \$182,094



*Purchase & renovation budget

PEOPLE Growing and Changing



Eric

Eric

Eric came to UCP Heartland Gibbs Center after spending many years in programs being told he would not advance above the 3rd grade level. Today, Eric is reading and writing like a young adult.

The king of hats, Eric enjoys having fun with his friends at Gibbs Center, goes on daily outings into the community and dances with staff and friends whenever the mood strikes him. What made the difference in Eric's abilities is a combination of one-on-one time spent on skill development and UCPH Gibbs Center staff believing resolutely that Eric could become his best possible self.

UCP Heartland helps people living with disabilities capture their dreams and become a vital part of our communities.



Baby Cliff



Gete

Cliff

A small bundle of love, Cliff came to the UCP Heartland Child Development Center (CDC) when he wasn't thriving at another program. The physical therapist working with Cliff was concerned that he was falling behind in walking and recommended that Cliff enroll in the UCP Heartland CDC.

Once Cliff started at the CDC, staff helped Cliff walk around the playground and the classroom, and this became a daily routine. Quickly, Cliff was on pace with his physical therapy goals. Now Cliff enjoys running and racing down the slide to victory!



Cliff loving the playground

Gete

Marguerite (Gete) needed emergency housing and came to UCP Heartland's 24 hour emergency respite facility after driving across state in a rain storm. After settling in, Gete began daily Adult Day Habilitation Services at our Canterbury Center in University City.

Recently, Gete took advantage of UCP Heartland's Independent Residential Services program and found a wonderful home with a roommate, complete with support services.

Congrats to Gete on her independence and on achieving a UCP Heartland program Trifecta!

PARTNERSHIPS Enhance our Services



Physical therapy at the Child Development Center



Adam with Sammi, student nurse at Respite program

*Thank
you*



Oats transportation driver helping Robbie into a van



Rob Miller, Blaze STL, helping Gete make a bowl

UCP Heartland is proud to have so many partnerships in St. Louis, Columbia and Jefferson City for each of our programs. From nurses and therapists to dedicated van drivers, to businesses that help train our clients in jobs and improve their skill sets, our program participants' lives are enriched through partnership support. Each of



Erika enjoying musical therapy at Manchester Day Program

these activities supports a community rich in diversity and helps our clients realize their true potential.

UCP Heartland thanks all of our committed partners, volunteers and donors for everything they do to help make our programs so special.



Jake training at Hy-Vee market in Jeff City

OUR AMAZING STAFF



Shy and Debbie, Canterbury Center

A focus of UCP Heartland is retaining our exceptional, highly trained staff. We achieve this through team building activities like *Direct Support Professional Week* and *Spirit Week*.

We also help retain great people by showing our appreciation through an agency-wide bonus program. Every staff member has the opportunity to receive a bonus two times per year, based on hitting key metrics like client and family satisfaction. The result of our initiatives is UCP Heartland's staff turnover is 50% of agencies throughout the country.

Additionally, the agency offers outstanding benefits including low cost health insurance. These are a few ways we say thank you to the people that work with our valued program participants each day and make their worlds so much brighter.

Thank
you



Employment staff showing off their super skills



6 Gibbs Center staff and clients love Spirit Week!



Kristin in the spirit at Canterbury Center



Manchester Day shows off their athletic skills

EMPLOYEES OF THE MONTH Promote Excellence and Advocate for Expert Care

Our Employees of the Month are excellent stewards of agency resources, are results driven and help the agency create strong, resilient families.

Each of our staff members, like our program participants, are great advocates for diversity and help us earn our reputation as leaders in the field of disability care.

UCP Heartland salutes our 2018 Employees of the Month who bring their "A" game to work every day.

Thank you



KC Boone, Employment Specialist, Jefferson City. *KC is great at scouting out opportunities and finds the most unique jobs for her clients.*



Gloria Hoskins, Training Specialist. *Gloria is our resident artist, forming extensive partnerships in the community to help develop clients' creativity.*



Jessica Viviano, Program Manager, Residential Services. *Jessica is a compassionate supervisor and a true champion of family rights.*



Alex Rathgeb, Employment Placement Specialist. *Embraced the "Year of Change" by strengthening partnerships in the community.*



Tarika Busby, Adult Day Assistant, Manchester. *Is a team player and her outgoing personality allows her to bring out the best in her clients.*



Jessica Williams, Training Supervisor, Adult Day, Manchester. *Supports independence for her clients and spreads positive energy.*



Reggie Redus, Personal Assistant, Canterbury Center. *A 20-year employee, Reggie has a positive attitude and one day, saved a life.*



Victoria Reaves, Residential Finance Coordinator. *Her caring and humble disposition lifts everyone up. She makes the workplace joyful everyday.*



Anni Peiffer, Employment Specialist. *Anni is a strong advocate for clients and goes out of her way to support them. Anni gets people employed.*



Kathi Shanks, Chef, Child Development Center. *Miss Kathi teaches children to choose healthy foods at school and at home.*

VOLUNTEERS: The Heart of UCP



The St. Louis Chapter of University of Michigan Alumni Club chose UCP Heartland for their annual volunteer day. The group painted the entire interior of a house over the course of 6 hours. The program clients living in the house chose their own room colors and came home with tears saying "I love it." Thank you to the University of Michigan for doing such an incredible job cleaning and painting the home. Many thanks to Hedva Levy and Michael Roth for spearheading this excellent project.

2018 Volunteer Impact:
394 Volunteers • 4,250 Hours

St. Louis University High Service Program



Volunteers, staff and program participants enrich each others lives. SLUH intern Ian Schocklee said, "Through the staff's acts of generosity and care of their clients, I could tell that the UCP Heartland workers really loved and enjoyed interacting with their clients every day."

Ian became friends with one of his clients, Andrew. They enjoyed talking about sports, family and friends over Andrew's communication's device. Today, they still keep in touch through social media as Andrew updates Ian on Cardinals and Blues sports trades.

"One night when I was working at UCP Heartland, I received a text saying 'Good Night Buddy.' I realized then how much I would always cherish this time."

VOLUNTEERS Bring Light Into Our World



Volunteer Activities

RubinBrown trainees scrubbing walls at our new program house in Webster Groves. The team power-washed the entire exterior, washed interior windows and gussied up the house for residents.



RubinBrown

Special thanks to board finance committee member **Becky Knezevich** for recommending UCPH to RubinBrown for "Volunteer Outreach Day" and to Scott Laurentius for coordinating his team. Great work RubinBrown!

The new respite home is positively sparkling. Thank you, RubinBrown for great teamwork.



WWT—It's a Family Thing!

World Wide Technology's Chris Weaver and his Dad Robert enjoy a day working together at the new Webster Groves house. Chris's brother Michael is a long-time UCPH program client at Canterbury Center. Thank you to Chris for organizing WWT Day and for introducing us to his friends.



BECOME A VOLUNTEER!

Make a difference as an on-site or off-site volunteer. Both groups and individuals can get involved in ongoing or one-time volunteer opportunities.

Volunteer roles include:

Service Project Days/Special Events
Classroom Assistants
Admin Support

Contact our volunteer office to learn more: 636.779.2276
volunteer@ucpheartland.org



World Wide Technology volunteers came from nearby and as far away as Hawaii to help us landscape our new house. The group of volunteers were dedicated workers, putting sweat equity into the job and even helped out neighbors by removing their dead trees. Thank you, WWT for such outstanding work...the property looks beautiful!

UCP HEARTLAND Programs

Family Support Services

Marlborough Hall, Canterbury Center and Metro St. Louis



Marlborough Hall features two programs:

Short Term Respite – Our caring staff offers families temporary relief from the daily care needs of a family member living with a disability. The Respite Program offers temporary *scheduled care* for adults with disabilities. Services are always available 24/7, all year long.

Emergency Residential - Provides safe, 24-hour residential services for adults with disabilities who require emergency assistance and lodging.

System Navigator *New*

Our new **Navigator** service provides valuable one-on-one support to help connect families to resources. The System Navigator provides information, referrals to programs, advocacy, education and family resources.

Children's Camps *Two types:*

Summer Voucher (St. Louis County)

Provides financial assistance for St. Louis County children with a diagnosed disability to attend a variety of summer camps.

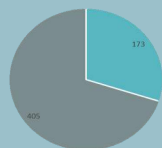
Disability Camps for Children (St. Louis) Camps take place on weekends, during school breaks and in the summer. Families can choose which camp to attend.

Program Goal: Provides families with daytime, overnight or weekly relief for caregivers while engaging program participants in activities.

Outcomes Achieved:

- ◆ 100% Clients have basic needs met.
- ◆ 100% Clients experience no out-of-home placements

Program Highlights: Launched System Navigator and assisted 33 families in the first 3 months.



173 Indirect 405 Direct

9.9% of Agency Expenses

578 Clients Served

Employment Resources & Talent Connect

Canterbury Center, Gibbs Center



The UCP Heartland **Employment Resources** program helps people living with disabilities identify their skills and interests to achieve a job of their choice. The program provides support to help job candidates develop relationships with co-workers, create a support network and shape their careers. Employment Resources helps program participants work toward independence.

UCP Heartland's **Talent Connect** program helps people begin and maintain careers in the hotel and hospitality industry. Program participants learn industry-related skills, soft skills and how to navigate barriers to employment. The program helps employers in the industry connect with dedicated, talented employment prospects who are industry-trained and ready for long-term, meaningful employment.

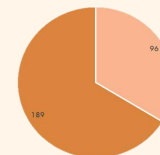


Program Goal: Provides training and support for people living with disabilities to access employment and attain economic independence.

Outcomes Achieved:

- ◆ 98% Clients retain employment for at least three months
- ◆ 100% Clients gain knowledge about community resources
- ◆ 81% Clients enroll in vocational training
- ◆ 98% Clients increase income, assets and savings

Program Highlights: Launched a new employment program in Jefferson City placing 8 people into jobs in 2018.



96 Indirect 189 Direct

6.7% of Agency Expenses

285 Clients Served

UCP HEARTLAND Programs

Adult Day Habilitation

Canterbury Center, Manchester
and Gibbs Center



The Adult Day Program provides individualized assistance for adults to choose activities and strengthen their skills. Services correspond with each individual's abilities and include assistance with social, adaptive and other skills that foster a greater level of independence. Adult Day programs also benefit from a multitude of community groups who visit the centers to perform music, lead educational sessions and share their talents with program participants.



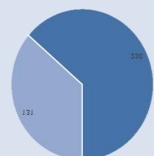
Program Goal: Provides the opportunity for continued learning, skills enhancement, socialization and community integration.

Outcomes Achieved:

- ◆ 90% of persons served develop positive friendships with peers
- ◆ 95% maintain/improve level of functioning/life skills
- ◆ 100% Clients feel less isolated
- ◆ 97% of clients successfully manage their health

Program Highlights:

- ◆ Opened the all-new Gibbs Center in Jefferson City complete with training kitchens, on-site RN, therapy programs and daily trips into the community.



38.3% of Agency Expenses
361 Clients Served

230 Indirect 131 Direct

Child Development (CDC)

Columbia, MO



The CDC is a licensed and accredited early care and education center that offers a unique environment where young children of all abilities learn together. Our collaborative development center integrates early intervention and education, active learning and nurturing relationships.

Half of the CDC's children have a diagnosed disability; the rest of the students are "developing typically." The program helps each child maximize their gifts and unique abilities to prepare them for kindergarten.

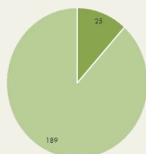
Program Goal: Through early identification, minimizes developmental delays and prepares children for school.

Outcomes Achieved:

- ◆ 100% gain knowledge about community resources
- ◆ 100% of students gain/maintain their level of functioning
- ◆ 100% of parents whose children participated in the Center's programming report that their child was ready to enter school.

Program Highlights:

- ◆ Launched first summer program for students who graduated from the CDC. Served 18 campers ages 5—8.
- ◆ CDC earned a capacity builder grant to be a mentor for Boone County disability programs.



6.2% of Agency Expenses
214 Clients Served

25 Indirect 189 Direct

Residential Services

St. Louis and Jefferson City



Independent Supported Living (ISL)

ISL provides 24-hour staff support to people living with disabilities. Staff members assist program participants with all aspects of personal care, cooking, medication, arranging transportation, coordinating medical care, community outings and social activities. Clients live with 1 to 2 roommates.



Independent Supported Living Assistance (ISLA)

ISLA provides up to 10 hours per week of staff support to people with disabilities living in their own homes. Residents learn new skills in 10 primary areas: medical, shopping, laundry, housework, safety, finance, transportation, jobs, socialization and cooking.

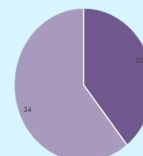
Program Goal: Provides the opportunity for people with multiple or severe disabilities to live in their own home or with a roommate.

Outcomes Achieved:

- ◆ 100% of clients have no out-of-home placements
- ◆ 100% of clients receive routine medical care
- ◆ 100% develop healthy relationships with family members and caregivers

Program Highlights:

- ◆ Hired an MSW as Program Director
- ◆ Opened two new residences



21.9% of Agency Expenses
56 Clients Served

22 Indirect 34 Direct

ADAPTIVE and Sensory Environments Meet Clients Needs



Sensory Room



Virtual Reality Headset



Universally Designed Kitchens The microwave, sinks and ovens are wheelchair height and everything pulls out to make it accessible for people seated or standing. Kitchen skills enable our program clients to find meaningful work anyplace that prepares food. It also helps people to develop life skills so that one day, they might be able to live independently.



ADAPTABLE TABLES The height adjusts with ease, allowing wheelchairs to move up to the table to work on crafts and other projects. Imagine finally being able to sit at the table! These are some of the new program enhancements that UCP Heartland is investing in.



EYE GAZE TECHNOLOGY Imagine being able to convey your thoughts for the very first time. This is eye gaze technology, an adaptive device that reads people's retinas. For people without the gift of speech or the use of their hands, communication is difficult. Today at UCP Heartland, many more program clients have a way to express their thoughts.



New Vans - \$50K Each!

Fully Accessible Vans insure that program participants are fully integrated into their communities. A focus of UCP Heartland's programs is ensuring that clients have a choice of activities each day, whether at the center or going on outings. Our vans make it possible for daily community outings.



Obi robotic dining companion helps people with a spectrum of disabilities dine independently.

SUPPORTERS Create Successful Events



Columbia Wing Ding Ambassador Ben with Luke

WING DINGS Rock

The Wing Ding tradition continued with more than 2,000 combined attendees at the 2018 Jefferson City, St. Louis and Columbia Wing Dings.

At each individual Wing Ding, local restaurants put their traditional, specialty and dry rub wings to the taste-test. Panels of celebrity judges savored contest submissions from participating restaurants and event attendees voted on the coveted “best in show” grand prize chicken wing. The “People’s Choice” winner in each city scored a bronze, chicken-topped trophy to prominently display in their restaurant. **The Wing Dings brought in \$113,862.**



JC Wing Ding Winner: Blue Skillet



STL Wing Ding Winner: Salt + Smoke



Laura Hettiger, KMOV and Torando



David Clay and Vicky Knoblock with Vicky's new Gala puppy.

DREAM GALA Program participants from throughout the state came to join the festivities at our 2018 Dream Gala held at the Grand Hall. The evening included a well funded live auction and an expansive silent auction. The percussionist group JOIA provided entertainment and KMOV’s Laura Hettiger was the evening’s MC.

The Gala raised \$184,938 for UCP Heartland programs.



Ed Balmes, Jerry Lis, Brian O'Neal and Chrissy Teske enjoy the Gala Kickoff

COMMUNITY OUTINGS Provide a Community Richness in Diversity



CDC Kids on a hay ride



Sheila greets a new friend at Warm Springs Ranch



Strolling on a sunny day



Yvonne enjoying making pottery at Blaze Studios STL

Community outings are the opportunity for our program participants to expand their worlds, and the opportunity for people within the community to become introduced to people living with disabilities. Exposure helps the community understand the connecting points that help people feel comfortable with each other.

Each adult day program (and sometimes the kids!) take daily, community outings. One program goes twice per day. Program participants choose which field trip is right for them. Some days it's a trip to a super store, other days, an adventure to a pottery studio. Every outing is an adventure and full of new experiences and plenty of smiles.



Jake and Judy on Legislative Day at Missouri State Capitol advocating for disability rights

GIBBS CENTER Grand Opening Brings Lots of Smiles



Our patron, Hallie Gibbs is learning about the fine art of muffin making in one of our three new training kitchens at Gibbs Center. Also pictured is the Lieutenant Governor Mike Kehoe, UCP Heartland CEO Brenda



The all new Gibbs Center features three universal design training kitchens; advanced technology; adjustable tables; spacious restrooms and laundry facilities; a high-tech sensory room and wall-size monitors to display environment- altering visuals.

The new center also offers extended hours showcasing employment and independent residential services managed by our highly trained staff. Three new vans help offer independence and choice to clients through daily outings into the community.



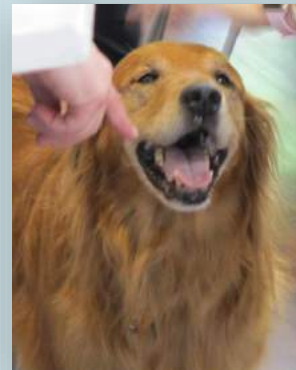
Lisa, Palmer Gibbs Center Director



Sharon and Amy enjoy a moment at the Grand Opening



Chefs Jake and Heather



Max gets love



Leann and Eric enjoying a little dance

GIVING CIRCLE Membership Levels

Humanitarian (\$50,000+)

Meeker Trust
Productive Living Board Capacity Building Grant
Souers Trust
United Way of Greater St. Louis

Visionary (\$30,000-\$49,999)

Express Scripts

Hero (\$20,000-\$29,999)

Hallie & Karen Gibbs and family

Ambassador (\$10,000-\$19,999)

Anonymous Friends of UCP Heartland
Brian & Mary Orsak
Dick Otke Construction
Enterprise Holdings
Fred & Jane Schmidt
Gateway to Innovation
Trust of Clarence A. Zacher, Jr.

Advocate (\$6,000-\$9,999)

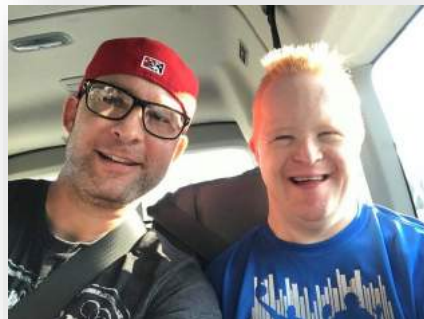
Buder, H.L. and Susan Charitable Trust
Central Bank of Jefferson City
IBM
James & Jennifer Sievers, II
Microsoft
Morris Converting LLC
Rich & Julie Fitzer
Rich & Kim Chong
Sally W. & William C. Proffitt Foundation

Community Enthusiast (\$4,000-\$5,999)

Bill Cady
Cady Family Foundation
Cory Hartung
First Bank
Hawthorn Bank
Jeff & Ann Rayfield
Jefferson Bank of Missouri
Kmeier Roof Systems
John & Nancy Ross
Midwest Bank Centre
Saint Louis Philanthropic Organization

Guardian (\$2,000-\$3,999)

Al & Patricia Bacon
Armando Siliceo-Roman
Ascension Health
AT&T Missouri
BAM Contracting
Bernard & Maureen McDonnell
Brian & Elizabeth O'Neal
Brian & Liz Hansen
Clifton Larson Allen LLP
Daniel & Henry Company
Drury Development Corp.
Edward & Joanne Storey
Gene & Joan Slay Charitable Foundation
George Von Hoffmann Foundation
Koller and Meador
Martin & Vicky Knobloch
Missouri Employers Mutual
Naught Naught Insurance Agency
R B Kahn Trust
Reinsurance Goup of America
Rick Aselage & Debbie Douglas
River Region Credit Union
Salesforce
Sarah Sievers
Sysco St. Louis, LLC
United Access
United HealthCare Services, Inc.
US Foods
Woodman Engineering Co.



**Nurse Marc and Nathan loving
Carpool Karaoke**

Crusader (\$1,000-\$1,999)

Alliance Technologies
Ankit Kumar
Larry Niell
Arthur Meyer
Bill & Tricia Bolster
Brian & Nina Murphy
Brenda Wrench
Color Art
Dan & Mary Hebrank
Dave & Christine Houston
Derek & Jessica Cinquemani
Ed Balmes
Erin Sievers
Harold & Donna Westhues
Isle of Capri
Jacques & Donna Thro
James & Judy O'Donnell
Jane Kaiser
Jennifer Borcharding
Joel & Sue Housewright
Kathi Harness
Kathleen Beach
Landwehr Family
Larry Neill
Laura J. Dunsmoor
Lori Burch
Lou and Marianne Rotter
Mike & Jill Larsen
Promise Homeworks
Prudential
Sean & Jill Hunt
Shaun Swearngen
Southern Hills Townhouses & Apartments
Steve Litzau & Sharie McLafferty
Steven & Connie Pautz
Tim & Ricci Moore
Tod & Kristen Raeber
William Marshall

Patron (\$500-\$999)

Andrew & Lauren Gillentine
Brown & Crouppen
Central Bank of Boone County
Children's Therapy Services
(University of Missouri)
Dive Bomb Industries
Edward Jones
Fechtel Beverage
Gundlach Services
Jain Family Charitable Fund
Kohl's Department Stores, Inc.
National Sales Solutions, LLC
Office Essentials
Peoples Bank & Trust Co.
PNC Financial Services Group
Reinhold Electric
TD Ameritrade
Bill Smittle
Carl & Jackie Conceller
Charles & Margaret Hudson
Dana Yam
Danielle Schrumph
Dave & Frankie Usai
Dave & Shari Clay
David & Megan Greathouse
Don & Nancy Ross
Eddie & Darcy Edwin
Eric & Judy Grainger
Henri McCracken
Jason & Angela Bean
Jeff & Jayne Hebrank
Joel & Sue Housewright
John & Lori Hanneke
Lalo J. Berezo
Matthew & Patti Billings
Michael & Sharon Ann Immer
Mick & Casey Gundlach
Myles McDonnell
Nick & Kristin Meador
Paul & Lisa Sombart

GIVING CIRCLE Membership Levels

Patron (cont'd)

Paul & Lisa Sombart
Roberto Rodezno
Sandy Wedewer
Stephanie Sieloff
Steve & Becky Kling
Thomas & Sally Hudson
Tim & Lisa Dolan
Timothy & Kelli Williams
Tom Wendell & Marian Nunn
Tyler & Courtney Poe
Wilson & Liz Sykes

Friend (\$100-\$499)

Alberta Long
Amanda Collier
Andrew Flick
Angela Madrid
Ann Young
Ashly Huber
Barbara J. Bouchee
Becky Nesbit
Bill & Lynne Cornelison
Brad & Susan Schultz
Branden & Monica Edmonds
Carol Blazicek
Carol L. Donelan
Carolyn Cope
Carolyn L. Coyle
Cathy & Gary Watson
Cathy Crawford



Friend (cont'd)

Charlene Ross
Charles Haggerty
Charles J. Frank
Charlie & Liz Felker
Chuck & Stacy Waeltz
Colin & Kristin Rohlfing
Columbia Dentistry for Children
Craig & Jenifer Strohbeck
Crill Brown
Cynthia Unland
Dan & Joyce Berra
Dan L. Davidson
Dean & Tara Kpere-Daibo
Dean Short
Dennis Flick
Direct Service Works
Donald & Janie Wolf
Donald Farmer
Dorothy Sterrett
Dwain E. Roberts
Ed Kniest
Elbin Guzman
Epsilon Sigma Alpha - Rho Chi
Chapter 2988
Ethan & Amanda Eitel
Evan & Maree Thomsen
Fiona Waller
Frank & Marlene Kreitner
Frank A. Parise, Jr.
Fred Weisel
Gail Stukenberg
Gary & Holly Oberkrom
Gateway to Precious Moments
Glen Yonetani
Greg & Marla Fuesting
Greg Loehr
Hamilton & Chrissy Callison
Harry Hill
Hawthorne Management Co.

Friend (cont'd)

Hugh & Diana Bissell
James & Mary Beth Kenley
James & Sally Laurentius
James E. Whaley
James Galvin
James Landwehr
Jana Stanley
Jay & Victoria Brenner
Jeffrey & Cheri Cooper
Jeffrey & Christine Comotto
Jeffrey & Gina Parker
Jerry Lis
Jim & Erin Thurmond
Jo Ellen Meier
John & Pamela Locke
John Falzone
John Torbitzky
John V. Adkins
Jon & Elizabeth Rendine
Joseph & Sara Barbeau
Joseph J. Barth, Jr.
Joseph Murphy
Judith Duncan
Judith Leach
Karyn Nondorf
Katy Rossi
Kevin Callaway
Laborers International Union of N.A -
Local NO. 110
Larry G. Mrazek
Larry Hasselfeld
Lauren Gray
Linda Ladendecker-Corley
Liz Downing
Lorelei Schwartz
Lucian & Lauren Nevatt
Luke Leidenfrost

Friend (cont'd)

Lyle Ziemann
Manuel Sanford
Marian McMillion
Marilyn Varrone
Martin & Judith Hughes
Mary A. Giovanni
Mary Ann Rooney
Mary D. Lewis
Mary Struempff
Matt A. Anderson
Matt Bauman
Maureen McCann-Billy
Mercial & Laura Stewart
Michael & Barbara Aufdenspring
Michael & Barbara Smith
Michael & Carol Zlatic
Michael & Martha Hogan
Michael & Patti Long
Michael & Rosemary Roth
Michael Sheahan
Michelle Barbeau
Mike & Loretha Alexander
Nancy Springman
Never Enough Boutique
Norma L. Lingle
Norman & Flora Hendricks
Osmond & Sandra Conrad
Pamela Hammond-McDavid
Patricia Cornelison
Paul Quindry
Phil Freeman
Rex & Lauren Fennessey
Richard & Betty Rodemyer
Richard & Jane Ciuffa
Richard E. Browning
Richard Jennett

Friend (cont'd)

Rick & Leesa Johnson
Rob & Christy Linden
Ron & Sandy Otto
Roxann Greenberg
Roy & Venita Butler
Ruth Meyering
Ryan & Stephanie Woodward
Sean & Caley Long
Shelby Jests
SnoBiz
Stephen Paul
Steve & Diane Schumacher
Steve Pizzalato
Susanne G. Jacobsmeyer
Terry & Sally Rackers
The Nunn Company, LLC
Theresa Huddleston
Thomas & Kathleen Bridges
Tim Varrone
Timothy Albers
Todd Reither
Tom & Diane Markus
Tom & Julie Kiehl
Tom & Mary Evans
Tom Talbot
Tommy & Kathleen Wisniewski
Travelers-Cyber Grants, LLC
Trevor Gonterman
U.S. Bank Foundation
Ursula Allison
Veterans United Home Loans
Vicki Nicely
William & Zoe Buckley
Williams-Keepers LLC
Windows & Wood

Thank you for investing in our mission!

IN-KIND DONORS Create New Possibilities

5 Star Burgers	Cody Stokes	House of Chow	Nothing Bundt Cakes	Stray Dog Theatre
AAA Automobile Club of MO	Como Smoke & Fire	Hy-Vee	Office of George Bush	Studio Home
Amigos Cantina	Conrad Towers	IMEG Corporation	Opera Theatre of Saint Louis	Sugarfire Smokehouse
Andy's Frozen Custard	Craft Alliance Center of Art + Design	Isle of Capri	Orangetheory Fitness	Sunshine Drapery
Andy's Seasoning Inc.	Craig & Jennifer Strohbeck	J. Pfenny's	Pandora Jewelry Paul Quindry	Ted Drewes Frozen Custard
Ankit Kumar	Crown Ridge Tiger Sanctuary	Jake's On Main	Phillip B. Cady	Tesla St. Louis
Anthonino's Taverna	Crowne Plaza Louisville Airport	Jane Kaiser	Piccione Pastry	TGI Friday's
Arch Travel Services	CUTCO Stores	Jeff & Ann Rayfield	Pieter Teeling	The Art of Entertaining
Baked Wood-fired Pizza	Cyrano's	Jeremy Liedenfrost	Pinot's Palette	The Fox Theatre
BAM Contracting Co. LLC	D Rowe's Restaurant & Bar	Joey B's	Pitaya, Inc.	The Glass Work Bench
Bandana's Bar-B-Q	Dalhousie Golf Club	Jon Tomas Salon & Spa	Planter's House	The Golf Club at Deer Chase
Barre 3	Dan & Mary Hebrank	JQ on High	Plowsharing Crafts	The Great Cover Up
Baxter Gardens of Chesterfield	David Graham	Just Dancing Dance Studio	Prestige Ballroom	The Magic House
Beautiful You LLC	Defiance Ridge Vineyards	Just Landscape Lighting, LLC	Prison Brews	The Melting Pot
Bentley Studio, Ltd.	Denny McClerren	Kakao Chocolate	PRP Wine International	The National WWI Museum & Memorial
Bernadette Groner	Don Blanc	Kansas City Royals	Quality 8 Theatre	The Pageant
Best Steak House	Drunken Fish	Kansas City Zoo	Ravi & Kay Johar	The Repertory Theatre St. Louis
Big Shark Bicycle Co.	Drury Hotels	Kendra Scott	Reinhold Electric Inc.	The Schlafly Tap Room
Big Sky Cafe	EdgeWild Bistro & Tap	Kennelwood Pet Resorts	Repertory Theatre STL	The Sheldon Concert Hall
Bill Hudson	Edward J. Balmes	Kent's Floral Gallery	Richard Holmes Construction	The Silver Smith's
Bill R. Cady	Endangered Wolf Center	Kreis' Restaurant	Rio Syrup Company	The Simon Law Firm, P.C.
Blue Skillet	European Wax Center	La Terraza Mexicana Grill	Riversong Spa	The St. Louis Cardinals
Bonkers	Extra Virgin: An Olive Ovation	Landmark Theatres	Rock & Brews	Thomas & Sally Hudson
Botanicals Design Studio	Fairmount Park Racetrack	Lass & Laddie	Salt & Smoke	Thomas Fallon Photography
Branson CVB	Ferguson Brewing Company	Lazy River Grill & Yellowstone Cafe	Seaglass Fine Art Photography	Three Kings Public House
Brian & Beth O'Neal	Flamingo Bowl	Les Bourgeois Winery	Seven Gables Inn	Time for Dinner
Brian & Kristy Straeb	Float STL	Linda Sheahan	Shakers Dog Wash	Timothy & Kelli Williams
Buffalo Wild Wings	Fred & Jane Schmidt	Lizzi & Rocco's Natural Pet Market	Shana Watkins Photography	Tin Roof Monogram & Gifts
Bumbershoot Aerial Arts	Fuzzy Zoeller Production	LuLaRoe	Shelter Insurance	Tom & Mary Evans
Butler's Pantry	Fuzzy's Taco Shop	Lutz's BBQ	Silver Dollar City	Truman's
C.J. Mugg's	Garden Heights Nursery	Maggiano's Little Italy	Simply Sterling Collection	UCPH Young Professionals Board
Caleco's Bar & Grill	Gateway Motorsports Park	Magic House	Six Flags - St. Louis	Union Station Kansas City
Calhoun's	Genovese Diamond & Estate Broker	Magnolia St. Louis	SkyZone	Upper Limits Climbing Gym
Carretero Family & Co	Ginger & Mary Ann Boutique	Mercy Health	Smokin' Chicks	Urban Chestnut
Casa Loma Ballroom	Glen Echo Country Club	Michael Christ	Southern Rentals and Real Estate	Vie Boutique
Cecilia Collier	Gus' Pretzel Shop	Mission Taco	Spectators	Vom Fass
Champs Chicken	Hallie & Karen Gibbs	Missouri Botanical Garden	Sports Zone	Walt's Bicycle
Chesterfield Athletic Club	Harry S. Truman Library & Museum	Missouri Historical Society	St. Louis Cardinals L.L.C.	Waterway Gas & Wash
Chesterfield Sports Fusion	Healthworks! Kids' Museum	Mitchell James Salon	Galleria 6 Cinemas	Weekday Best
Chrissy Teske	Highlands Golf & Tennis Center	MX Movies	St. Louis Rowing Club	Westlake Ace Hardware
Citizens National Bank	Hodak's	National Baseball Hall of Fame	St. Louis Symphony	Westrich Photography
City Museum	Holiday Inn - Executive Center	National Tiger Sanctuary	St. Louis Wing Company	Wine Merchant
Climb So iLL	Holiday Word & Splashin' Safari	Nestle Purina PetCare Company	Stacey Krueger	Witt Print Shop
CMAS Cheerleading	Hollywood St. Louis Casino & Hotel	Noboleis Vineyards	Steel Wheels	Woodard Cleaning & Restoration Services
COCA	Hotshots Sports Bar & Grill	Norton's Fine Art & Framing	Straub's Grocery	World Bird Sanctuary
Cocktailz: A Beauty Bar	Houlihan's		Strauss Peyton Portrait Gallery	Yoga Six



Advocacy day at the Capitol



Program art from Gibbs Center



Sierra helps Yvonne stamp a bowl

BOARD OF DIRECTORS UCP Heartland

Chairman of the Board
Jeff Rayfield

Chair Elect
Kelli Williams

Vice Chair, Business Finance
Rick Aselage

Vice Chair, Operations
Richard Chong

Vice Chair, Governance
Brian O'Neal

Vice Chair, Development
Armando Siliceo-Roman

Secretary
Ed Balmes

Ana Archer

Cheri Cooper

Ravi Johar, M.D.

Jane Kaiser

Ankit Kumar

Jerry Lis

Tod Raeber

Rick Talerico

Chrissy Teske

Joy Voss

President & CEO
Brenda Wrench



Jeff Rayfield, Senior VP,
Wells Fargo Advisors



Kelli Williams, Director, Global
Talent Acceleration Programs
RGA Reinsurance



Rick Aselage, Retired



Richard Chong, VP & GM
Client Services, Express Scripts



Brian O'Neal, Attorney
McMahon Berger



Armando Siliceo-Roman
Global Client Director
Sales Force



Ed Balmes, Principle
Mayer, Balmes & Associates



Ana Archer, Occupational
Therapy, Student,
Washington University



Cheri Cooper, Managing
Director, Wells Fargo Advisors



Ravi Johar, MD
Chief Medical Officer
United Health Care



Jane Kaiser
Head of Bayer Crop Science
NA Seed Production



Ankit Kumar
Global Field System
Development Lead, Bayer Crop



Jerry Lis
Partnership Executive
Strategic Clients IBM



Tod Raeber, Manager
Sigma Aldrich



Rick Talerico
Senior Analyst
JAG Capital Management



Chrissy Teske
Senior Attorney
Commerce Bancshares, Inc.



Joy Voss, Ph.D.
Assn't Clinical Professor
St. Louis University

Young Professionals Board



Casey Gundlach, President



Marian McMillion, Vice
President



Andrew Gillentine,
Treasurer

UCP Heartland Locations

St. Louis

Corporate Offices

13975 Manchester Rd.
Manchester MO 63011
(636) 227-6030

Canterbury Center

8645 Old Bonhomme Rd.
St. Louis MO 63132
(314) 994-1600

Respite

1118 S. Laclede Station Rd.
Marlborough MO 63119
(314) 962-0015

Central Missouri

UCP Heartland Child Development Center

3804 Santiago Dr.
Columbia, MO 65203
(573) 449-6783

UCP Heartland Gibbs Center for Independence

1719 Southridge Dr.
Jefferson City, MO 65109
(573) 761-7300

Visit Us: www.ucpheartland.org



Our Gibbs Center Family Photo



Staff and program participants at the Grand Opening of Gibbs Center, our technologically advanced, regional disabilities program facility in Jefferson City, Missouri

